

Forest View Falcon News

FOREST VIEW ELEMENTARY SCHOOL NEWSLETTER



January 3, 2024

From the Principal

Greetings Forest View Families!

Happy New Year! We are excited that our students are back. We hope the time that you spent with family and friends created many memories and you enjoyed the celebrations you observed. As we return from winter break, we will take the time to review our schoolwide behavior expectations. These expectations, whether in the classroom, on the playground, or other areas of our school keep students Safe, Responsible, and Respectful.

In January, K-5 students will take the i-Ready diagnostic in reading and mathematics. We encourage students to do their best work during the diagnostic. Data from this assessment will inform teachers on how students are progressing, which helps them when planning instruction and providing targeted interventions for students as needed. The I-Ready Central Family Center has great resources for engaging in i-Ready lessons at home, understanding diagnostic results, and tracking student progress. You can find this resource here:
<https://i-readycentral.com/familycenter/>.

As students transition back to school, being on time as often as possible is essential to keeping up with their grade level curriculum. Attendance is important to student learning and their academic growth. School starts at 9:15 a.m.

The winter months bring colds, flu, and other respiratory ailments. If your child should contract COVID, please review the return to school policy. This is also the time when students should dress warm. Please put names on all coats, hats, and gloves. Adding names to lunch boxes, water bottles, and other items will also help us return these items to their owners when found.

Warm Regards,
Mrs. Beane

www.everettsd.org/forestview

Monique Beane
Principal

January 5

Learning Improvement Friday 2:15 dismissal.

January 12

Learning Improvement Friday 2:15 dismissal.

January 15

No School, Martin Luther King, Jr. Day

January 19

Learning Improvement Friday 2:15 dismissal.

January 26

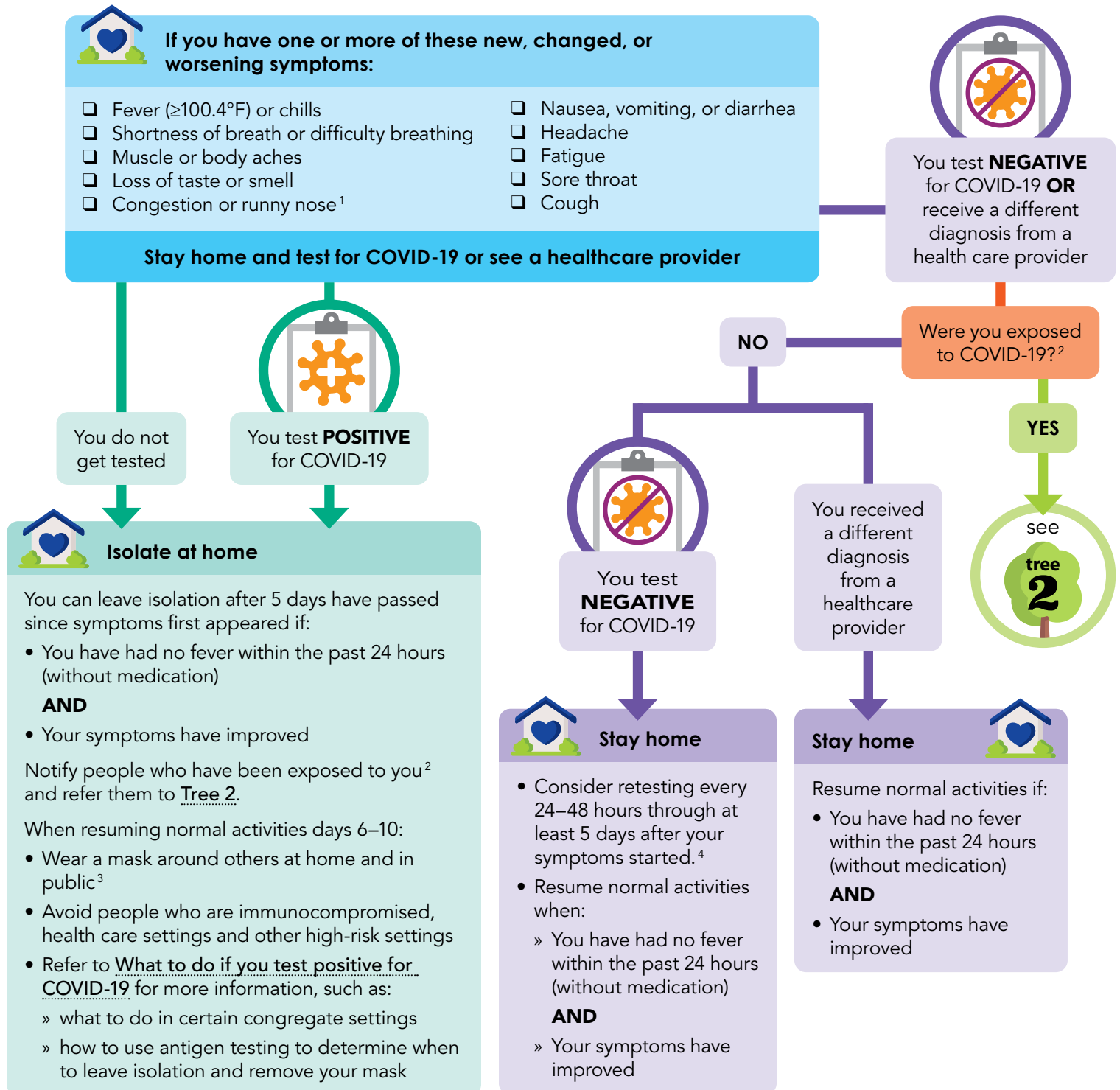
Learning Improvement Friday 2:15 dismissal.



What to do if you have COVID-19 symptoms



This decision tree is for the general public and non-health care settings, such as schools and child cares.



¹ If the person is under the age of two and ONLY has this symptom, testing and isolation are not required. If the child's symptoms worsen or persist beyond 5 days, contact a health care provider.

² Exposed to COVID-19: someone who was within 6 feet of a COVID-19 case for more than 15 minutes within a 24-hour period during the case's contagious period. The definition of a close contact may vary in some situations.

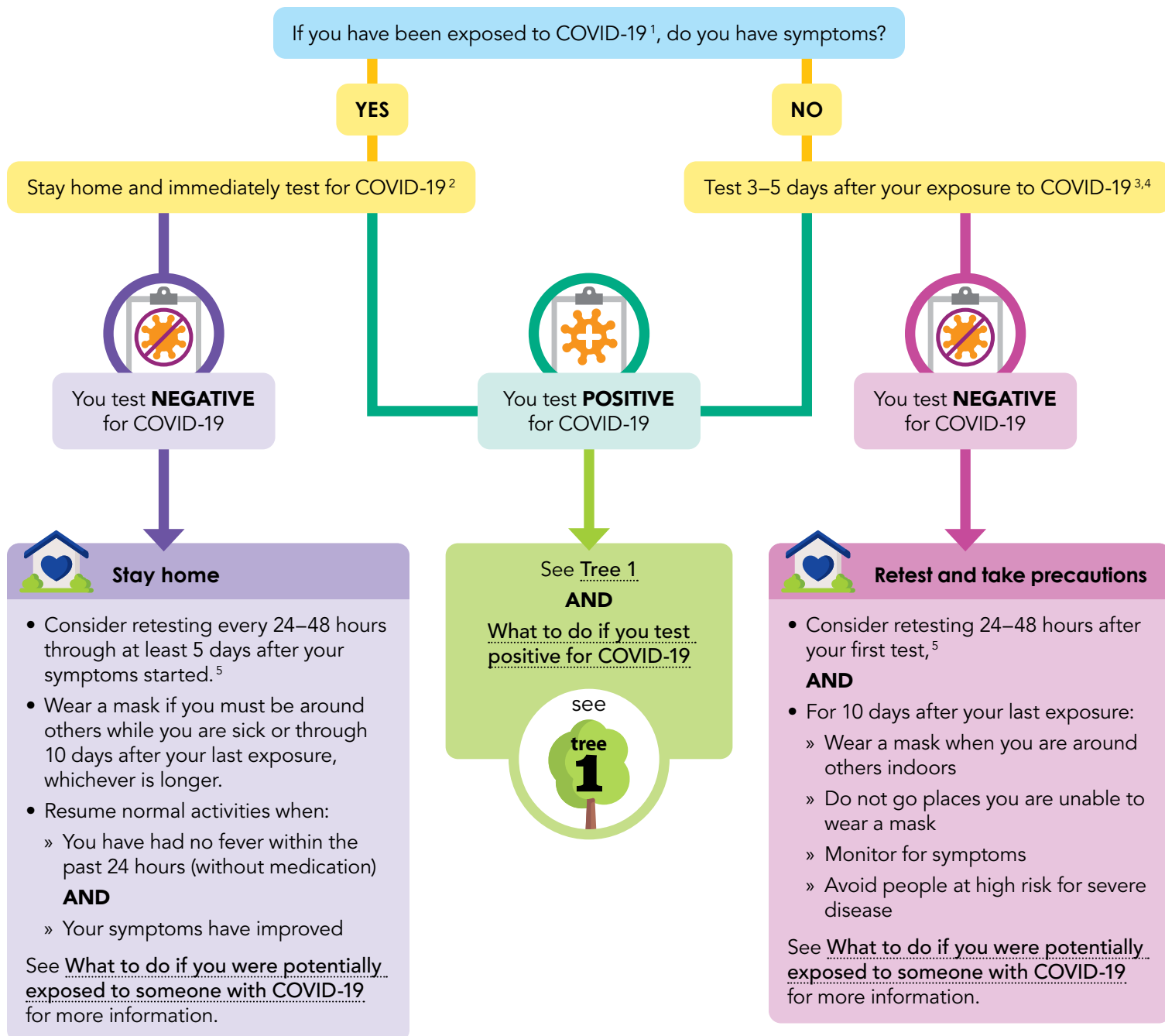
³ If you cannot wear a well-fitting mask, you should complete a full 10-day isolation at home.

⁴ See **Self-Testing Guidance for the Public** for additional information about using repeat testing if you test negative. If you tested negative with a molecular laboratory test (e.g., PCR), you do not need to repeat testing.

What to do if you have been exposed to COVID-19



This decision tree is for the general public and non-health care settings, such as schools and child cares.



¹ Exposed to COVID-19: someone who was within 6 feet of a COVID-19 case for more than 15 minutes within a 24-hour period during the case's contagious period. The definition of a close contact may vary in some situations.

² If you tested positive in the past 90 days and have symptoms of COVID-19, use an antigen test (not a PCR test).

³ If you have tested positive in the past 30 days and recovered and do not have symptoms, testing again for COVID-19 is not recommended. You should, however, wear a well-fitting and high-quality mask around others, not go places you cannot wear a mask, monitor for symptoms, and avoid people at high risk for severe disease for 10 days after your last exposure.

⁴ If you tested positive in the past 30–90 days, use an antigen test (not a PCR test).

⁵ See Self-Testing Guidance for the Public for additional information about using repeat testing if you test negative. If you tested negative with a molecular laboratory test (e.g., PCR), you do not need to repeat testing.



January is School Board Appreciation Month

The month of January marks the annual observance of School Board Recognition – a time to salute the work of school board members and celebrate public education. You can learn more about [board members online](#). You can also [watch past school board meetings](#) on the district's YouTube channel. Find out more about the district's two new board members on the [school board](#) webpage.

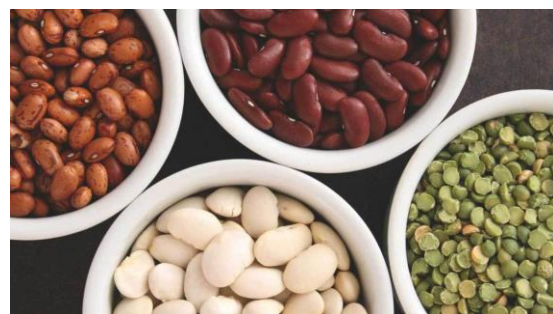
The Washington State School Directors Association (WSSDA) honors exemplary school boards that improve student learning and follow best practices of governance. Everett Public Schools Board of Directors has earned this honor for the eighth time this year for presenting exemplary evidence of ongoing professional development, addressing opportunity gaps and practicing governance that reflects the Washington School Board Standards.

Harvest of the Month

This month, the Food and Nutrition Department brings you beans grown in the PNW! Be sure to give them a try this month in our black bean burger or vegetarian chili!

Did you know that there are over 40,000 different varieties of beans and they are an excellent source of protein and fiber? Find out more by checking out the Harvest of the Month flyer on the district [website](#).

I've "bean" thinking about you.



Delayed start or closed schools

If we must [cancel school or delay the start of school](#), we will use our parent communication system to call in the morning, typically around 5:00 a.m. (or sometimes the night before if it can already be determined) with a brief message about the reason for closure or delay. We will also use local media, social media and post the message on our website.

If there is no announcement about Everett Public Schools, school is on the regular schedule. More information and resources for school closures or delays is on the district website under the *Parents* tab.

In cases of inclement weather or other emergencies, please:

- check your email or phone for district messages
- listen for media announcements
- view the district's website at www.everettsd.org
- watch district [Facebook](#), [Twitter](#) or [Instagram](#) accounts

Snow routes are online

School drop off and pick up locations may change in an emergency situation. If your child rides a bus to school, please become familiar with the snow route information on the district [transportation department's webpage](#) under the "Snow Routes" icon in the center of the page.



Safety tip line

Do you or your student have a concern about someone experiencing bullying or harassment? **Report it!** You can talk directly with your school's office or you can call, text or email your concern.

If there is reason for concern about safety on a designated walkway to school, call 9-1-1 immediately for authorized, quick help. We have strong partnerships with local law enforcement who share our interest in safe schools and neighborhoods. Student safety is a priority for all of us. Working together, we can help make our neighborhoods and schools nurturing places for students to safely learn and grow.

3 easy ways

Text or call
855-637-2095
1350@alert1.us
<https://everett-wa.safeschoolsalert.com>



First semester ends soon

This is a reminder first semester ends February 1. Report cards and Elementary Progress Reports will be both online and mailed/distributed by February 16.

Good Citizenship Day

**Register
to vote
here.**

Good Citizenship Day is observed on January 16. On that day, social studies teachers coordinate a voter registration event in each history or social studies class attended by high school seniors. Students who will be eighteen years of age or older by the time of the next general election will be allowed to register to vote online in the classroom. Paper registration will also be made available in the classroom.

Registering to vote is easy. Visit the [Snohomish County webpage](#) for details on the three ways you can register to vote or update your registration or scan the QR code. Students who are 16 & 17 years old can now pre-register to vote.

You can sign
up today, it's
easy! Scan this
QR code:



3900 Broadway
Everett, WA 98201
425-385-4000
www.everettsd.org

• Everett Public Schools does not discriminate in any programs or activities on the basis of sex, race, creed, religion, color, national origin, age, veteran or military status, sexual orientation, gender expression or identity, disability, or the use of a trained dog guide or service animal and provides equal access to the Boy Scouts and other designated youth groups. The following employees have been designated to handle questions and complaints of alleged discrimination:

Title IX/Civil Rights Compliance Officer and ADA Coordinator:

• Chad Golden
• 425-385-4100
• CGolden@everettsd.org
• PO Box 2098
• Everett, WA 98213

Section 504 Coordinator:

• Dave Peters
• 425-385-4063
• DPeters@everettsd.org
• PO Box 2098
• Everett, WA 98213